

Galerie XII **Los Angeles**

## THIS EARTHEN DOOR



**Jan. 31 > April 18**

### **Reimagining Emily Dickinson's Herbarium**

2525 Michigan Avenue  
Suite B2, Santa Monica  
CA 90404 (424) 252-  
9004 [galeriexii.com](http://galeriexii.com)

Artists **Amanda Marchand** and **Leah Sobsey** bring a fresh, contemporary vision to Dickinson's 19th-century botanical collection. Using the experimental anatype printing process, they transform historical specimens into vibrant, modern works of photographic art.





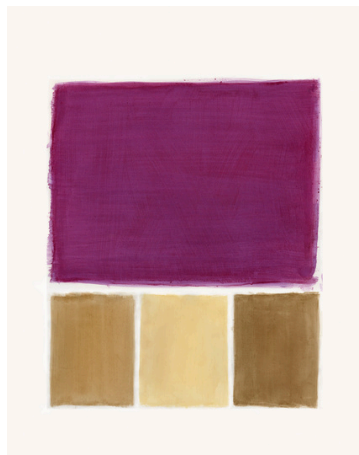
*"In a gesture honoring Dickinson's nearly 200 year-old effort, we grew and harvested plants to remake her flower sampler with an alternative photo-process known as anthotype. Antho means flower in Greek. Anthotypes are plant-based photographs, a process dating back to when Dickinson was at work on her herbarium."*



Left: Anthotype created with red lily (Hemerocallis), depicting Emily Dickinson's profile at age 14. Based on an original drawing by Charles Temple (1845). Negative. Size 16.5 x 21".  
Right: a page from Dickinson's original herbarium.



I held a Jewel in my fingers, 2023  
size 40 x 50"



Your paragraph text



Black Currant –  
Herbarium Plate 57,  
2023  
Size 30 x 40"

Amanda Marchand is a Canadian artist and educator based in New York whose work explores the natural world through an experimental approach to photography. Her practice often bridges science and art, using alternative processes to create contemplative, light-driven works.

Marchand's recent accolades include the LensCulture Awards (2024), London Photography Awards (2024), Julia Margaret Cameron Awards (2023), and recognition on the Silver List (2022). She has held fellowships at prestigious institutions such as the Hermitage Artist Retreat, MacDowell Colony, Mass MoCA, and Headlands Center for the Arts.

Her work has been exhibited internationally in solo and group exhibitions. This Earthen Door debuted at the Stephen and Peter Sachs Museum and will be featured at the Brandywine Museum of Art in 2025. Marchand has published three monographs with Datz Press: *This Earthen Door: Emily Dickinson's Herbarium* (2024), *Nothing Will Ever Be the Same Again* (2019), and *Night Garden* (2015). Her artist books include *The World is Astonishing with You in It: A 21st Century Field Guide to the Birds, Ferns and Wildflowers* (2022).

Leah Sobsey is an artist, Associate Professor of Photography, curator, and Director of the Gatewood Gallery at the University of North Carolina at Greensboro. Her multidisciplinary practice spans photography, nature and science, design, installation, and textiles, often exploring the intersection of art and ecology.

Sobsey's recent exhibitions include the Huntington Museum (CA), Photofairs NYC (2023), the Stephen and Peter Sachs Museum, and the Harvard Museum of Natural History, with upcoming presentations at the Brandywine Museum of Art (2025) and the Gregg Museum (*In Search of Thoreau's Flowers*). Her project *This Earthen Door* was featured at Paris Photo with Datz Press.

Her publications include *This Earthen Door: Emily Dickinson's Herbarium* (Datz Press, 2024), *Collections: Birds, Bones and Butterflies* (2016), and *Bull City Summer* (2013). Sobsey's work is held in private and public collections across the U.S., including the Huntington Library, North Carolina Museum of Art, Cassilhaus Collection, Credit Suisse, Duke University Hospital, Fidelity Investments, and the Microsoft Collection. She has participated in numerous artist residencies, including Virginia Center for the Arts, Dumbarton Oaks, Penland, the National Park System, Hambidge, and Habla Mexico.

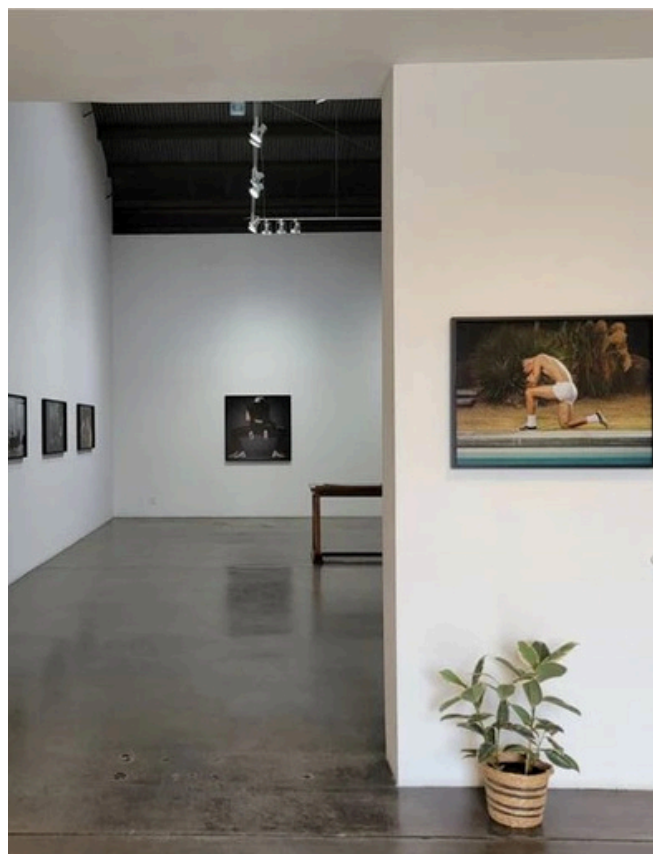
## Galerie XII Los Angeles

2525 Michigan Avenue  
Suite B2, Santa Monica  
CA 90404  
(424) 252-9004  
galeriexii.com

Valérie-Anne Giscard d'Estaing  
Gallery Owner  
vagiscard@galeriexii.com

Anatalia Bianchi  
Director, L.A.  
anatalia@galeriexii.com

Ethan Tague  
Curator  
ethan@galeriexii.com



Galerie XII, founded by Valerie-Anne Giscard d'Estaing in 2007, focuses on contemporary photography and strives to promote artists with a strong narrative sensibility, often working with a multidisciplinary approach at the intersection of photography, painting, sculpture and collage. The gallery has recently opened its program to international contemporary artists whose work engages in material experimentation and cross-disciplinary approaches

Through exhibitions and participation in international art fairs, Galerie XII highlights the evolving landscape of contemporary visual art, emphasizing its fluid boundaries and the dialogue between traditional techniques and digital innovation.

Galerie XII Los Angeles opened in 2018 and is located at Bergamot Arts Center, Santa Monica. Since its opening, the gallery has received critical acclaim and consistently showcases four to five solo exhibitions a year both its Los Angeles and Paris locations, as well as group shows. It participates to several Art Fairs such as Art Paris, Paris Photo, The AIPAD Photography Show at the Armory in New York, Photo Basel, Photo London, etc. The Gallery is a member of AIPAD (Association of International Photography Art Dealers) and CPGA (Comité Professionnel des Galeries d'Art).